

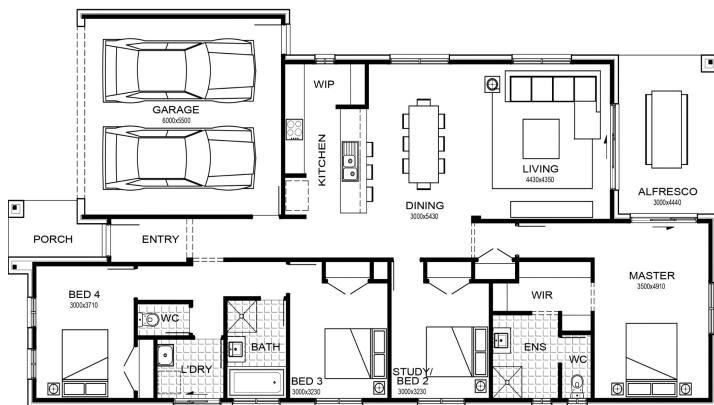
# Senka Homes

Making first homes happen.



## Marlow 22R

House size: 22 Sq  
Land Size: 350 m<sup>2</sup>  
Land dimensions: 12.5 m x 28 m



\*The facade and floorplan are for illustrative purposes only and intended as a guide. Actual dimensions may vary due to external wall thickness, design modifications, or landscape requirements. All floorplans are subject to land conditions, developer guidelines, and design adjustments that may be necessary to meet regulatory or site-specific criteria. Please refer to working drawings for precise and final details. All home designs are subject to developer and council approval. Any alterations to the design or inclusions may incur additional charges. Senka Homes reserves the right to amend or withdraw any design, pricing, inclusions, or promotions without notice. \*For further details, please consult a sales consultant or visit [senkahomes.com.au/discuss](https://senkahomes.com.au/discuss). Registered building practitioner CDB-U54559.

**CONTACT**

[senkahomes.com.au](https://senkahomes.com.au)