

Home & Land Package



Land Price: \$409,500
Home Price: \$500,950

Package Price: **\$910,450**

Bayside 25

Lot 953 Everbloom Crescent,
Unity Park Estate, Tarnet

Facade: Crayo*
House size: 25.40 Sq
Land Size: 392m2
Land dimensions: 14 m x 28 m



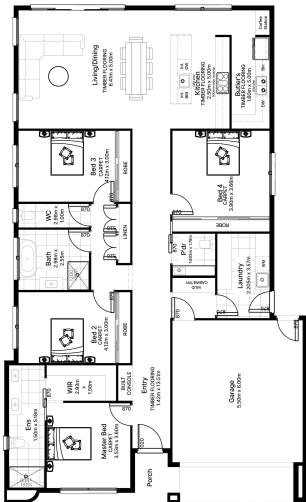
- 5% Deposit
- Fixed Site Costs
- European Appliances
- Cooling Included

This package includes:

- FIXED site costs
- 7 Star Energy Rating
- 2590mm ceilings
- 2340mm high doors
- LED Downlights
- 900mm Fisher & Paykel appliances
- 40mm Stone to kitchen island
- 20mm Stone to balance
- Phoenix Designer Tap-ware
- Overhead kitchen cupboards
- Oversized sink bowl
- Soft Close Drawers
- Soft Close Toilets
- Premium carpet
- Timber laminate flooring
- Frameless Shower Screens
- 600 x 600 floor to ceiling tiles
- Stone splash back to kitchen
- Square set cornices throughout
- Remote control garage
- Free Standing Bath
- Colourbond roof

CONTACT OUR TEAM:

Customer Enquiry Team
hey@senkahomes.com.au
0418 227 860



*Fixed Price current as of 13/09/2024. Pricing based on developer engineering plans & plan of subdivision. Individual homes may be smaller than dimensions shown on the floorplan due to external wall thickness, site working drawings for finished home dimensions. Confirm dimensions and availability prior to purchase. Subject to developer and council approval. Price does not include any stamp duty, government, legal, or bank charges. Alterations may incur additional charges. Senka Homes reserves the right to withdraw or amend pricing, inclusions, and proportions without notice. (Subject to the SPA) requirements will be credited back to the client if Senka Homes receives confirmation that the house is not being constructed in a DA designated area. This cannot be confirmed until site survey and property information from relevant authorities is received.

Floor plans and facades are for illustration purposes only and should be used as a guide. Actual dimensions, finishes, and features may vary. Refer to working drawings for accurate details. Senka Homes reserves the right to withdraw or change pricing, inclusions, or proportions without notice. *For further details on our 12-month price lock, or promotional inclusions, speak to a Sales Consultant or visit [senkahomes.com.au/developer](https://www.senkahomes.com.au/developer). Registered Building Practitioner (DBP) 1516599.

Senka Homes

Making first homes happen.

CONTACT
[senkahomes.com.au](https://www.senkahomes.com.au)